

LEGEND

- Glue
- * Cutout - make a hole



Model : No. 0246/III/10



Tinker Bell Paper Craft

I made this template for my daughter. In the beginning I thought it was an easy project, but apparently it was not that easy after all. It supposed to be a filler model between war machine part releases but it took quite a while to make this template. But I quite satisfy with the result, this Tink looks pretty and cute. I recommend to use about 100-120 gram of paper, the tricky parts are both arms because they are small cylinders and the right leg because it has a hole on the part so both leg can be cross closes together. You can use celluloid to make her wings, each wing is a set of overlapping base wing part and wing detail part. Glue the wing on her back with power glue.

DISCLAIMER

Paper-replika is not affiliated or representation of Walt Disney
Paper-replika is a personal unofficial fan & hobby site.
This papercraft is a fan made model.

DO NOT USE FOR ANY COMMERCIAL PURPOSES, PLEASE USE FOR PERSONAL USE ONLY.

All trademarks mentioned belong to its respective owners - **Disney - PIXAR**

Visit : www.disney.go.com

Assembly Instructions - click here

Petunjuk Perakitan

Papercraft by Julius Perdana - 2012

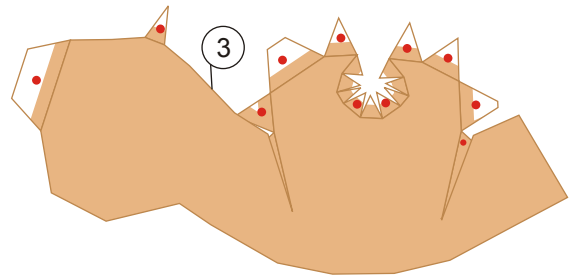
All for free models

Paper-replika.com

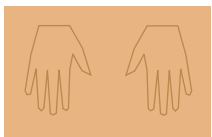


1

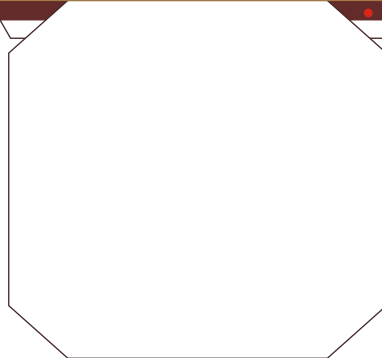
2



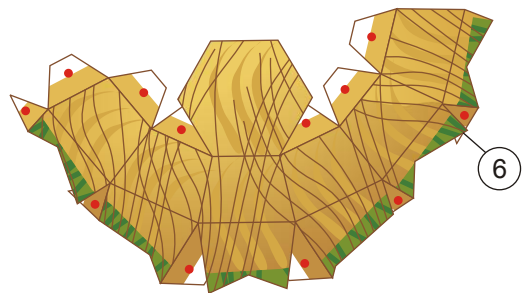
3



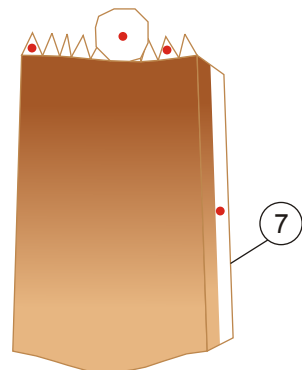
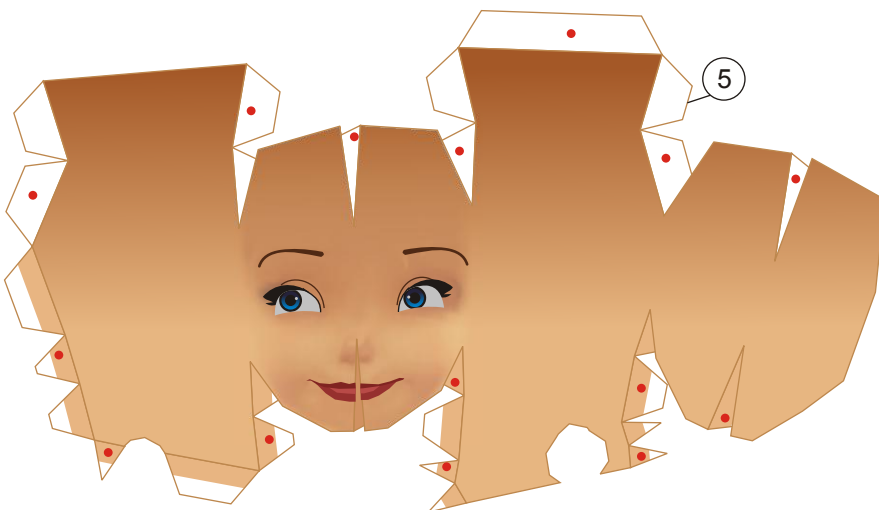
4



5



6



7



