

LEGEND	
●	Glue
✱	Cutout - make a hole



Model : No. 0332/V/13

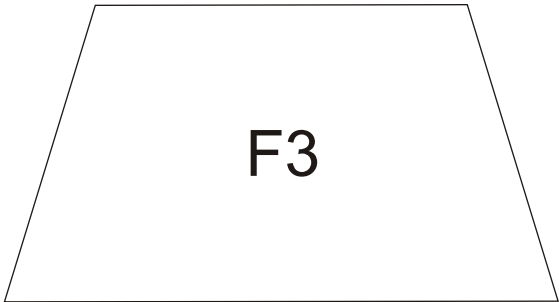
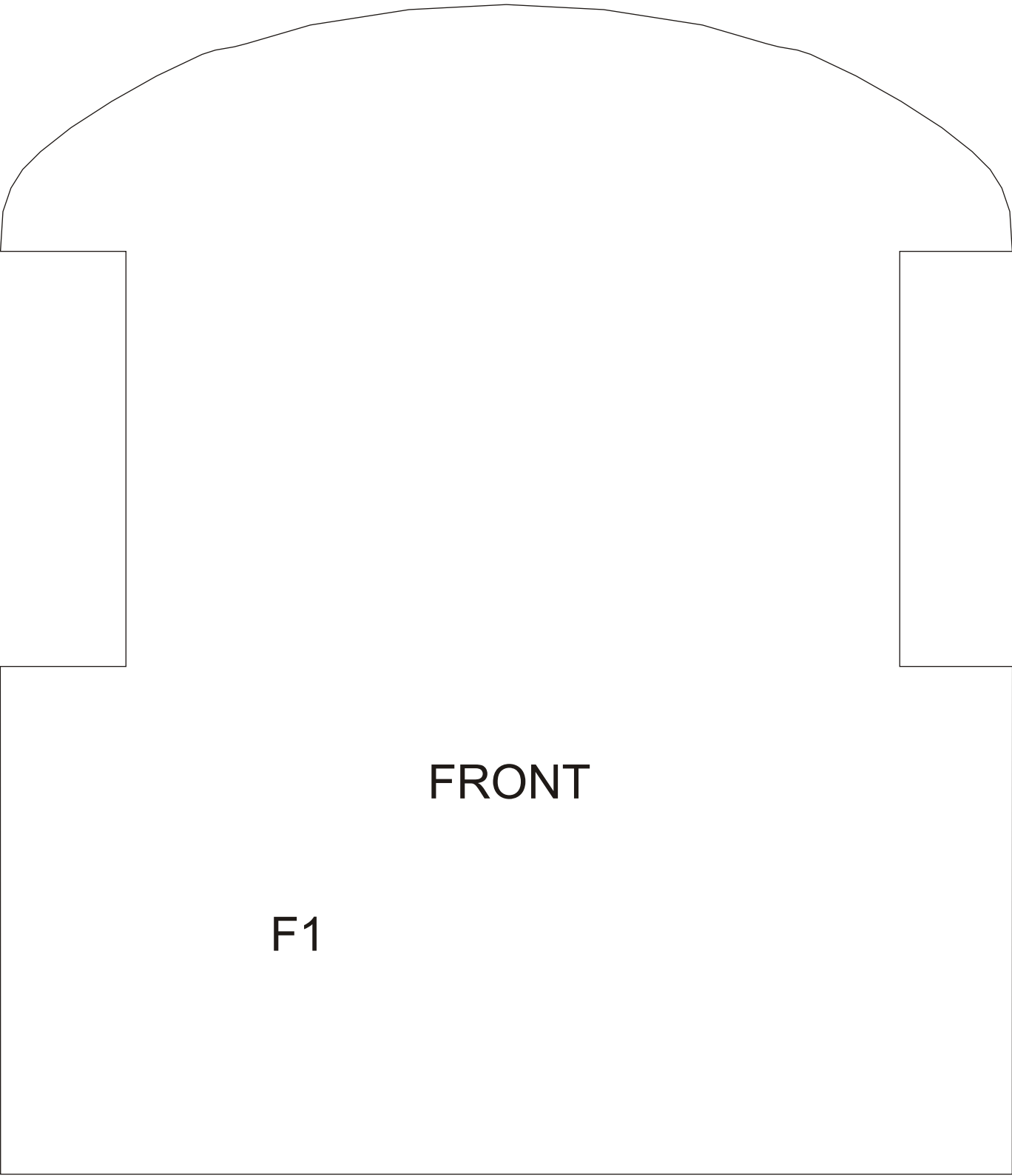


Honda Civic Type R - R3

Scale 1 : 10 - Tamiya TT01 Body

I just bought a second handed RC car, a Tamiya TT01. It came with a broken Mazda RX7 body. It gave me an idea to make a body from paper model that will fit on that 275 mm wheelbase chassis, so there are no interior parts in it. Then a friend of mine gave me suggestions for a cool rally car, finally I fixed my decision to make this Honda Civic Type R R3 paper model because it looks very cool, and because the rims are the same as the rims on my RC model car. Although this paper model was specifically designed for TT01 body, it also can be assembled as a stand alone paper model because I also provide patterns for wheels. The complete model will has 41 cm length and 13 cm height. The livery of this Honda Civic was designed by JAS Motorsport, an Italian racing team. I add a watermark on every images on this post, because I received many reports about some of Paper Replika's model were sold in eBay, which is supposed to be free for download here.

Assembly Instructions - [click here](#)
Petunjuk Perakitan



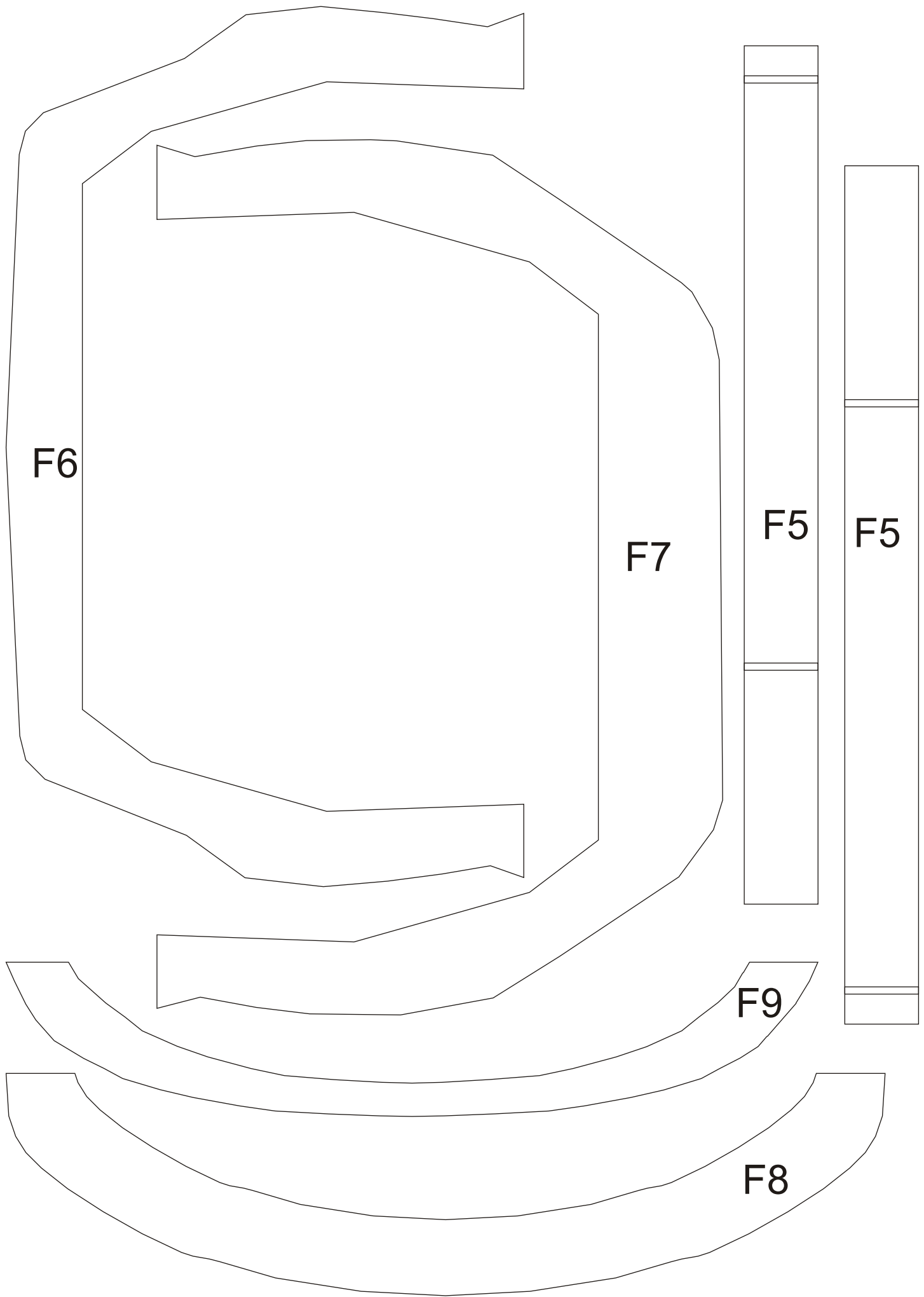


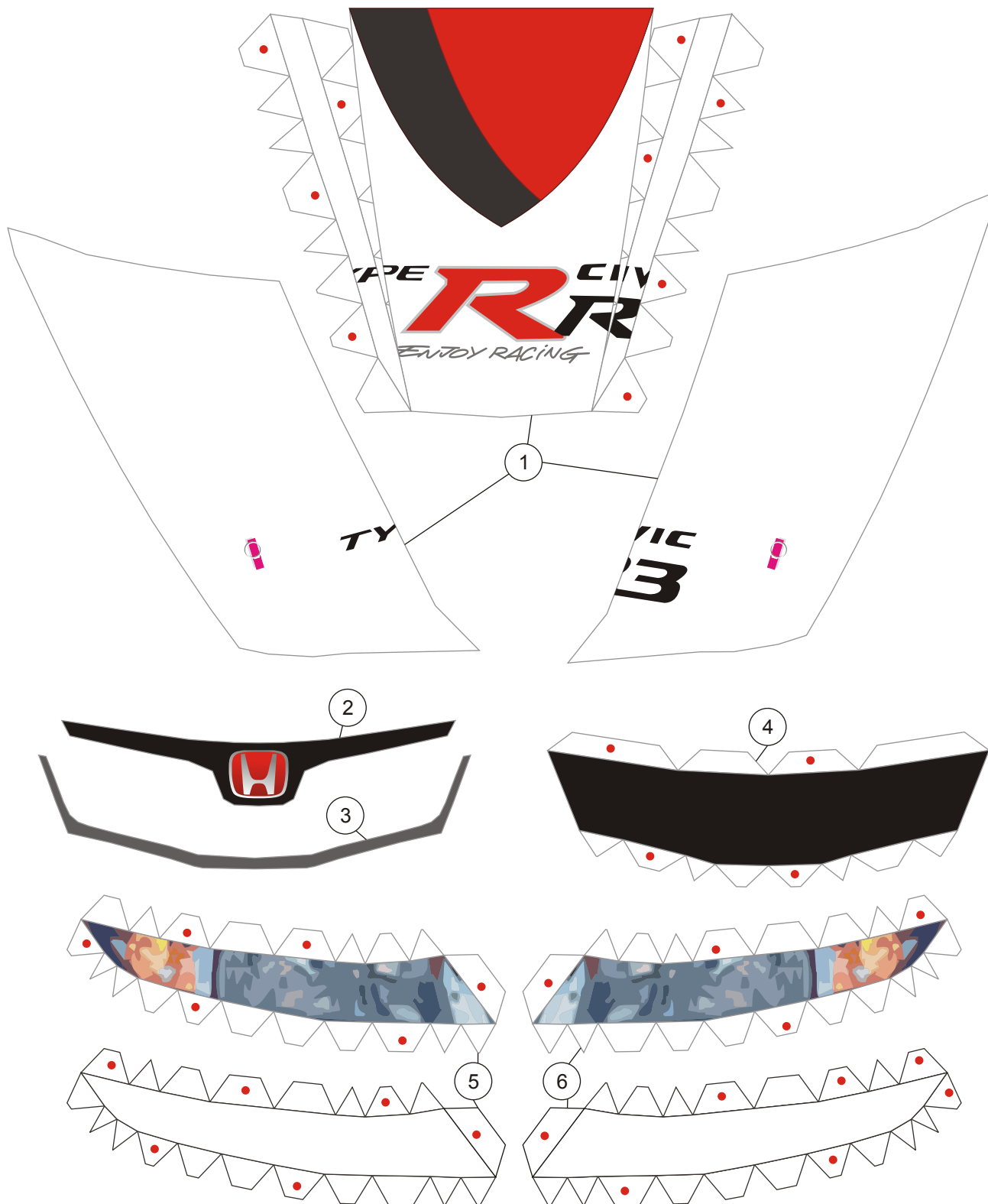
REAR

F1

F3

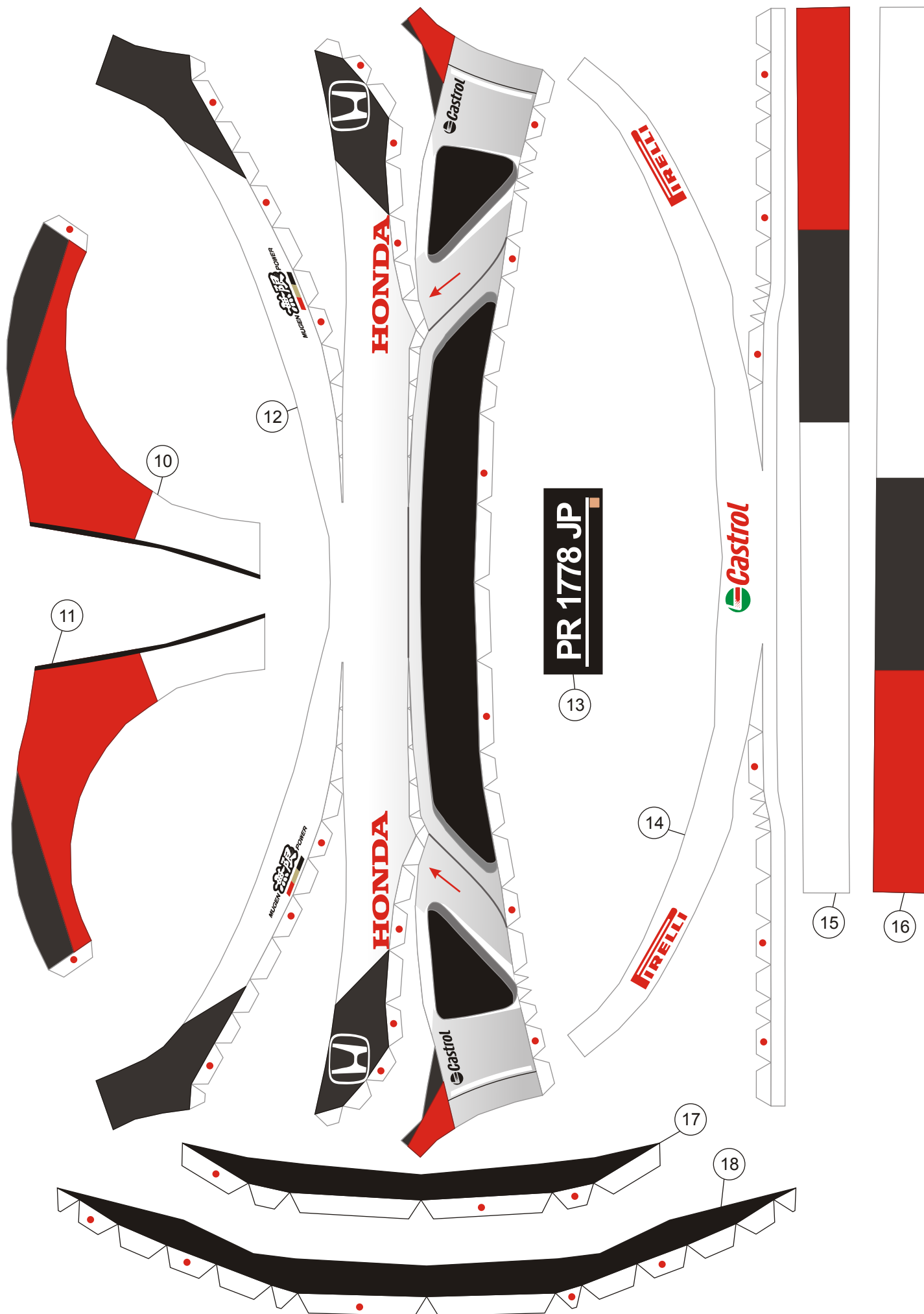
F3

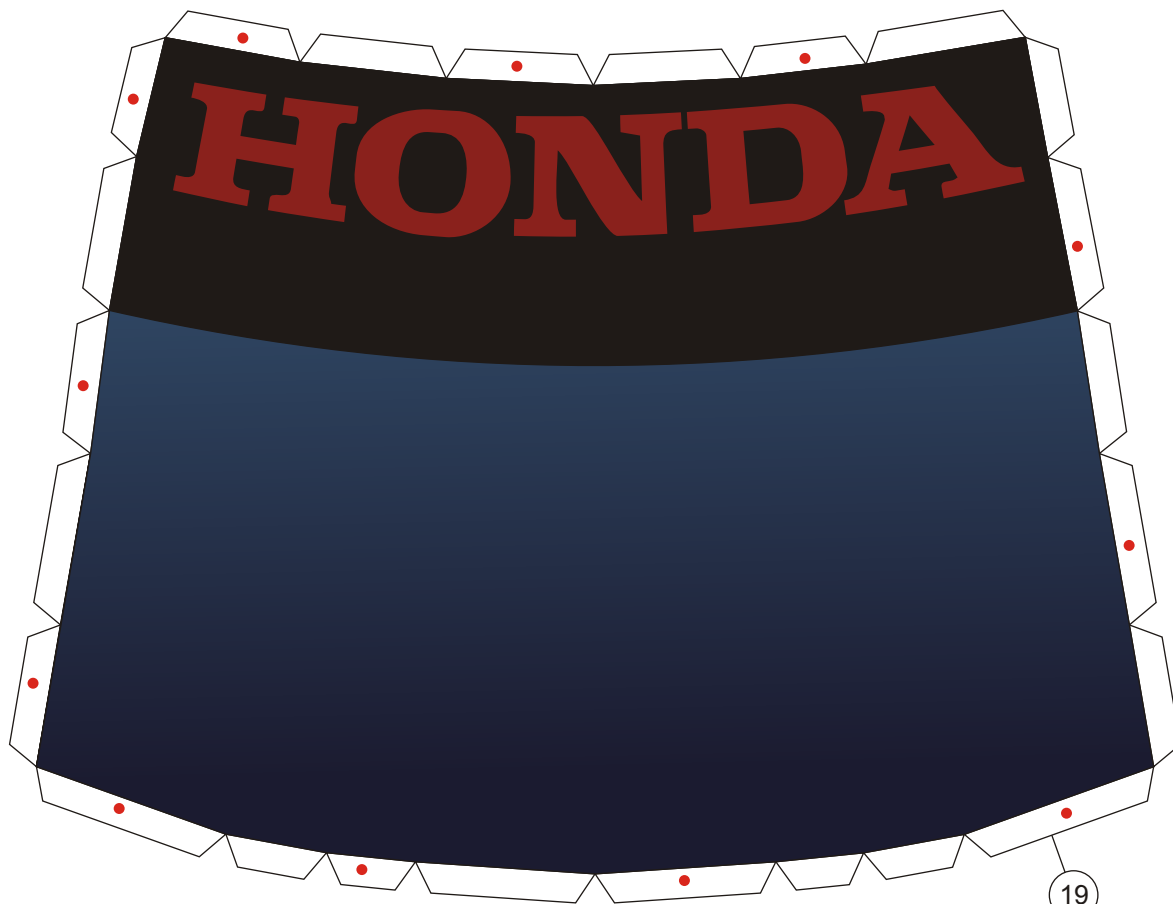




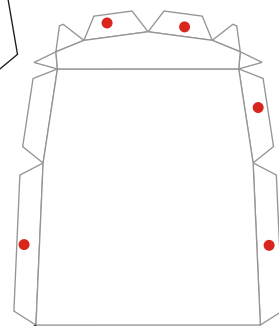
F2



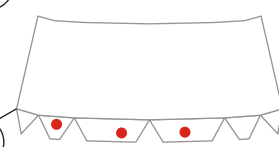




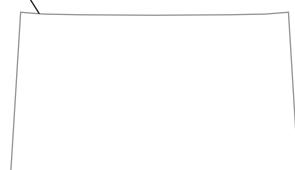
19



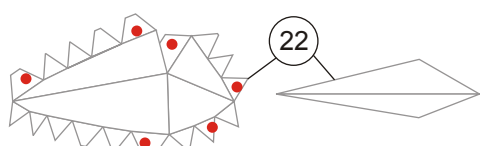
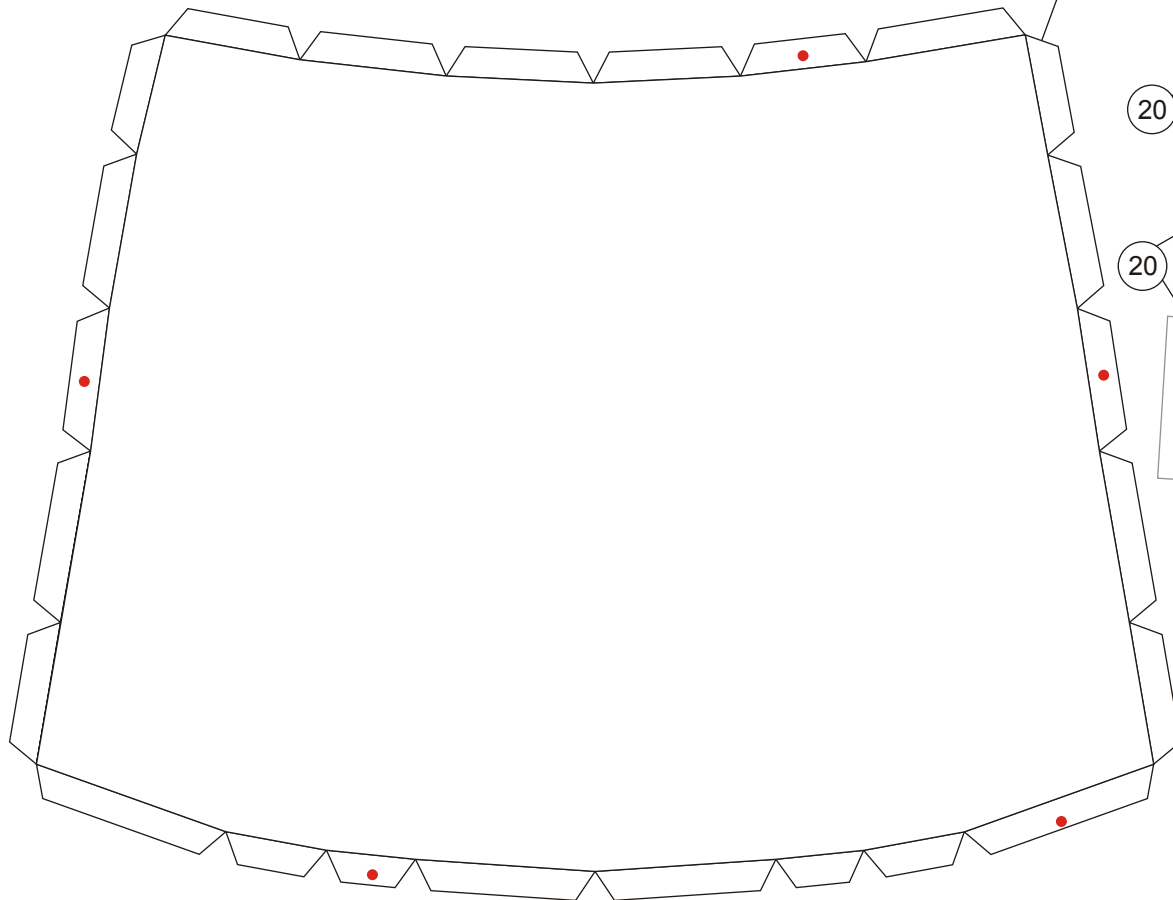
20



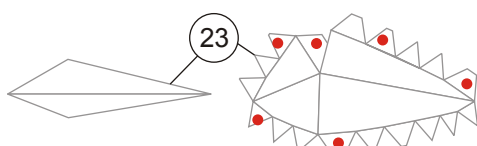
20



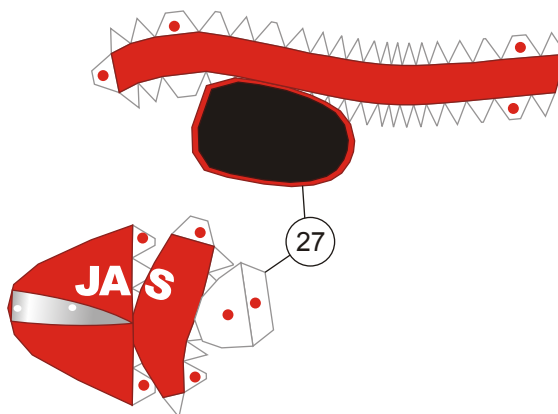
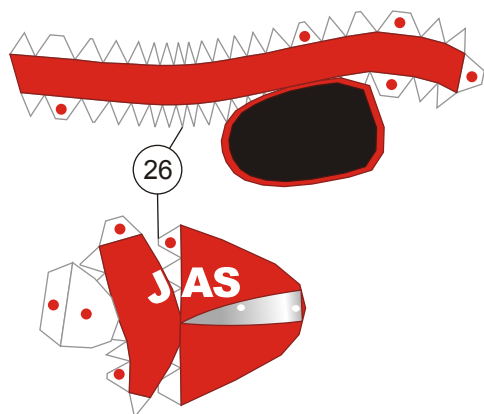
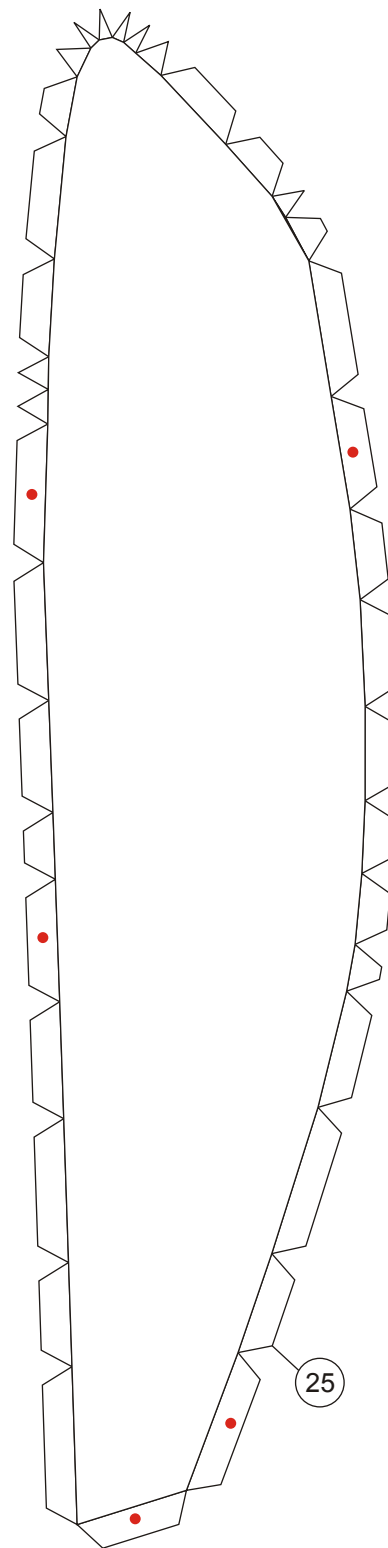
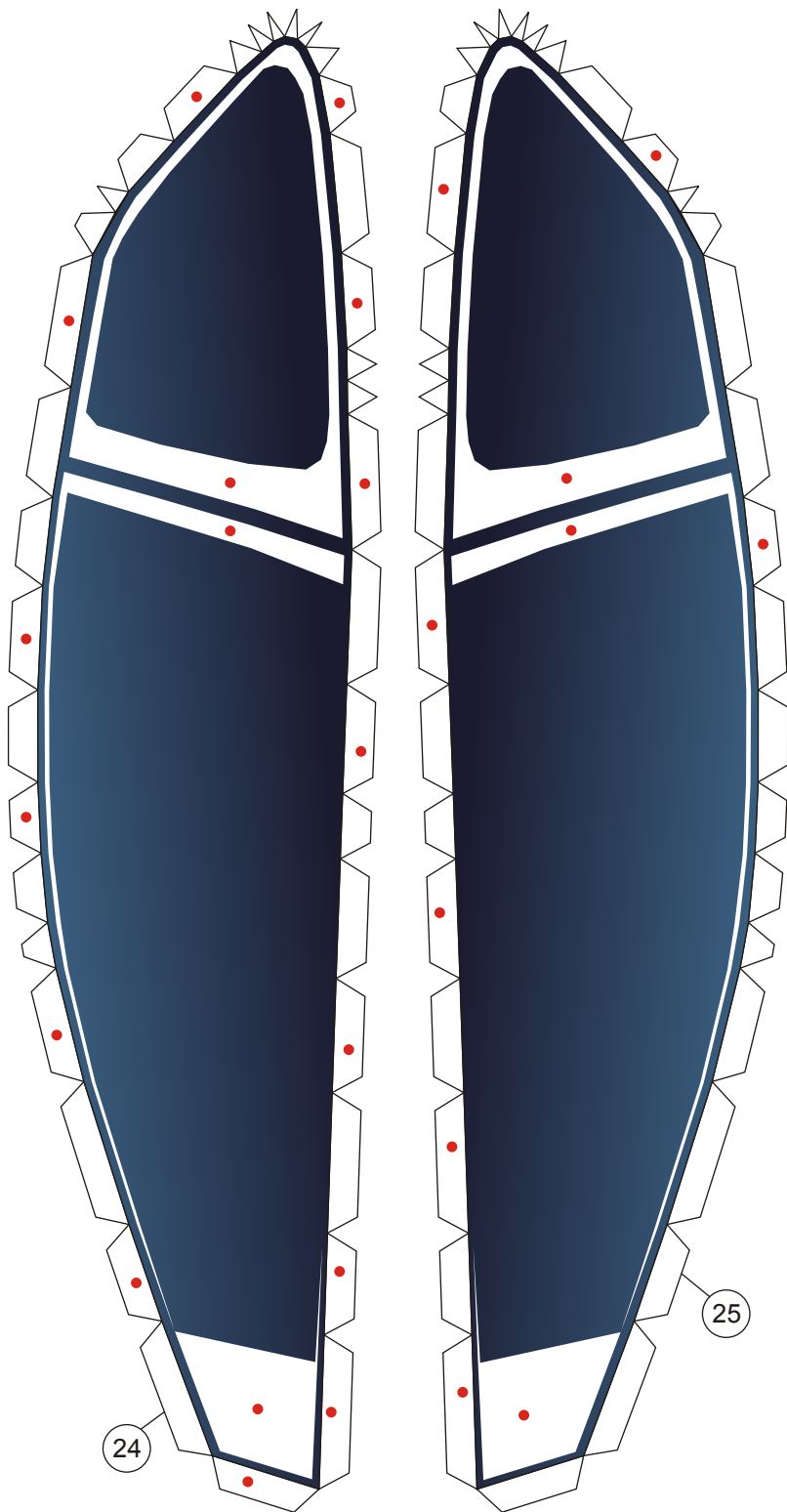
21

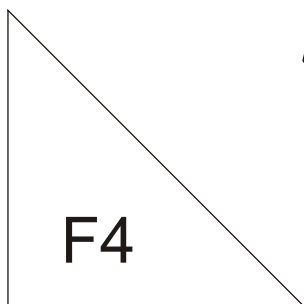
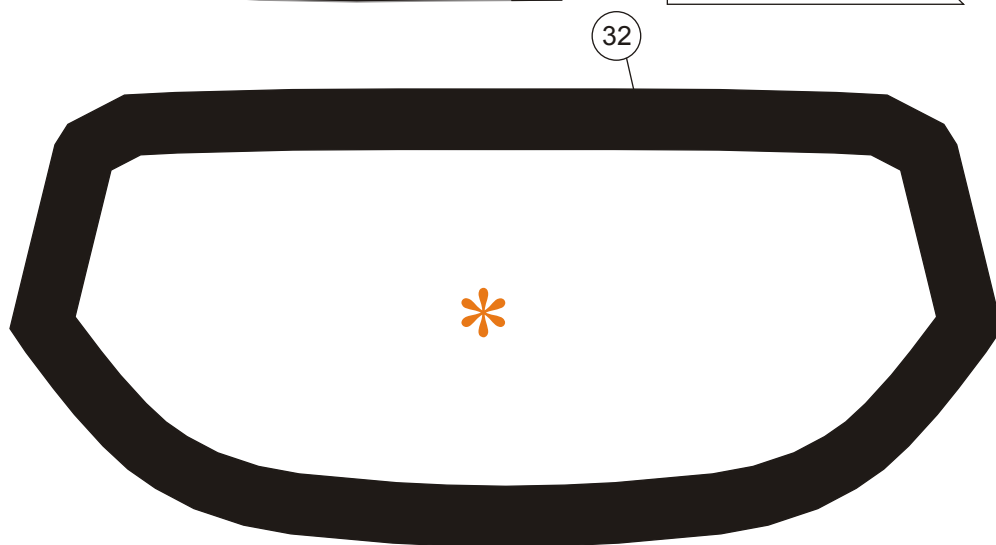
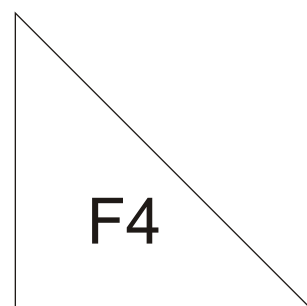
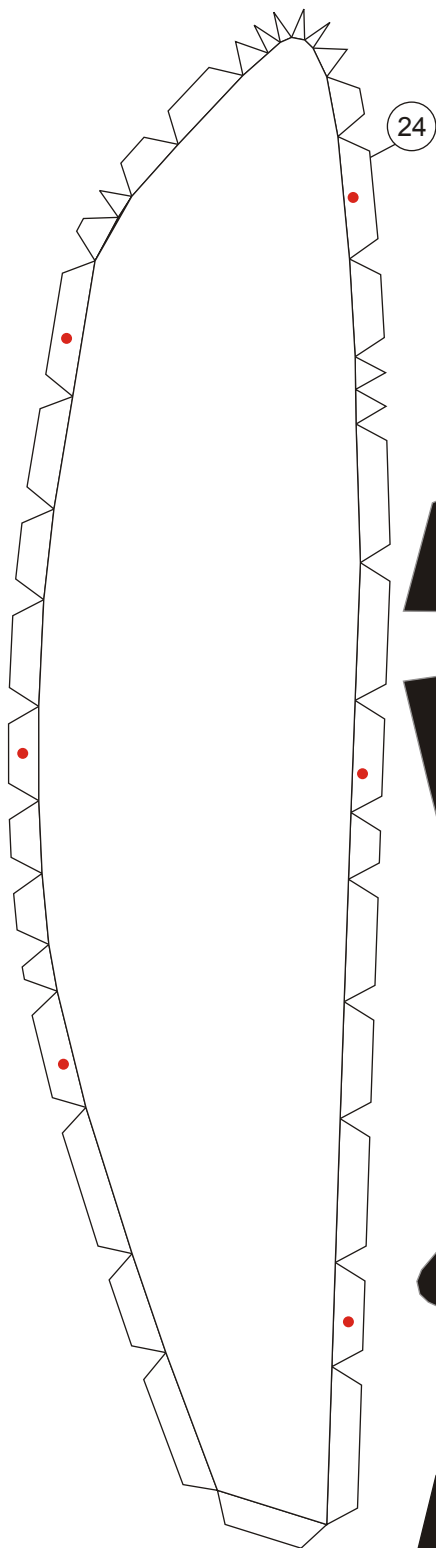


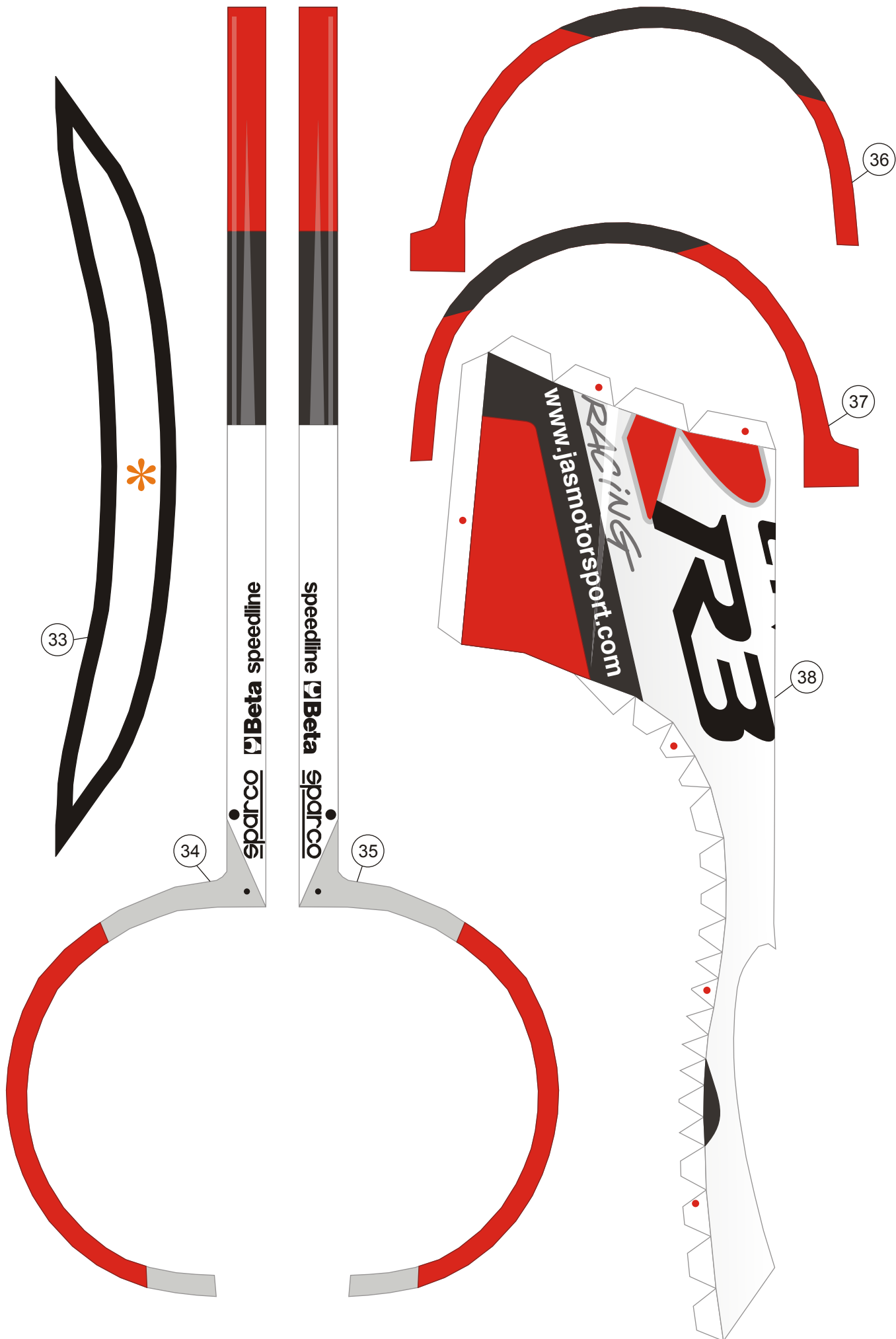
22

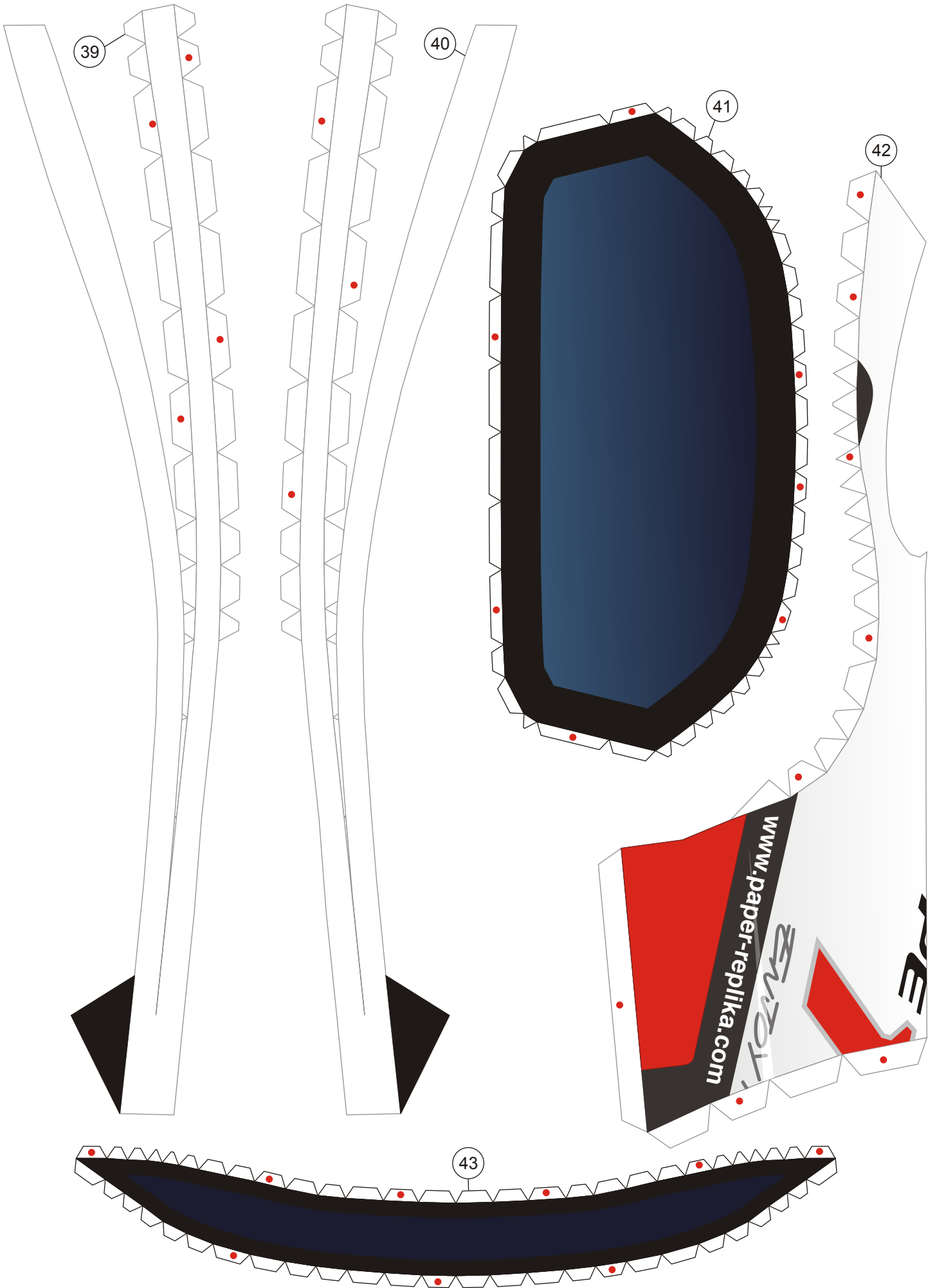


23



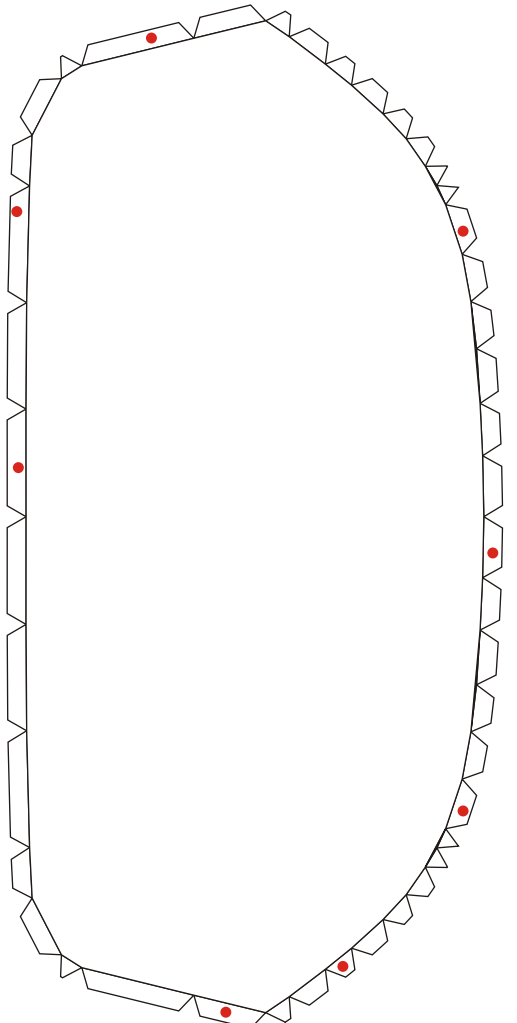




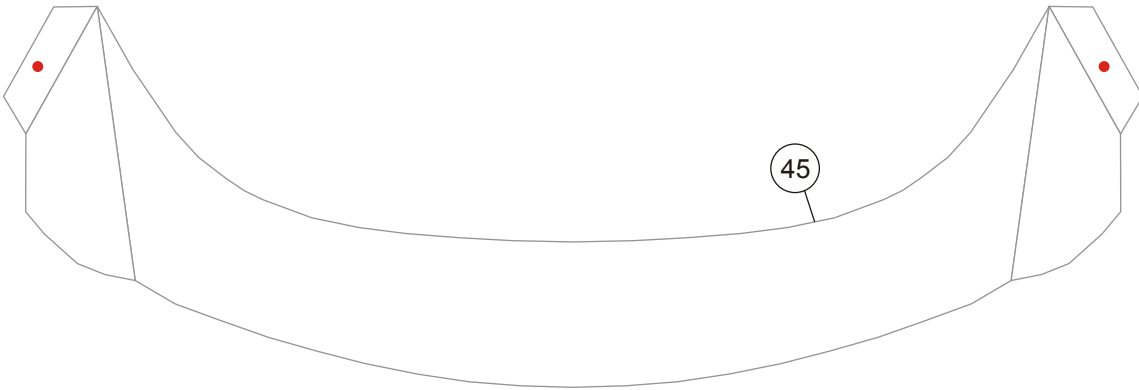




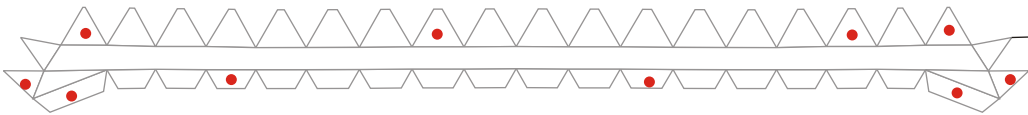
44



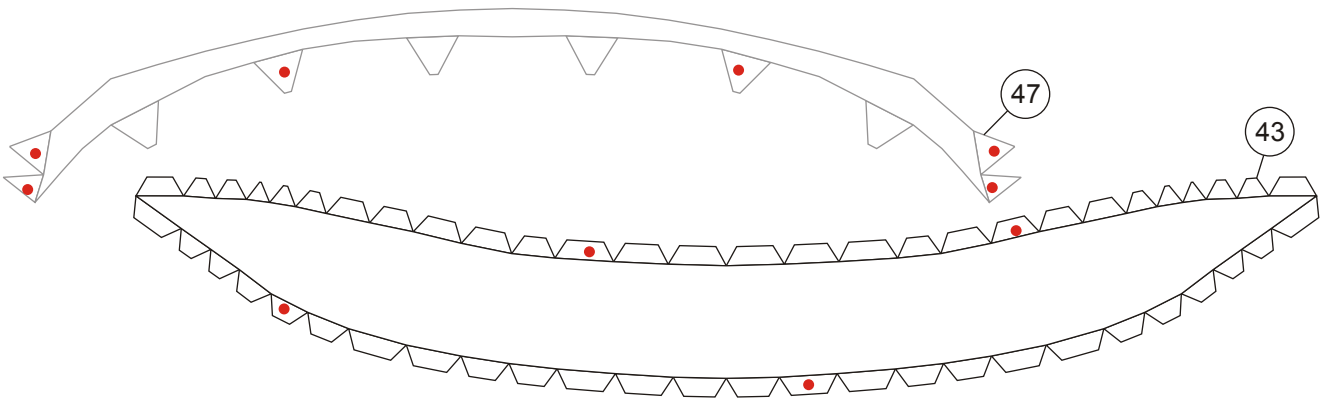
41



45



46



47

43

