

LEGEND

- Glue
- * Cutout - make a hole



Model : No. 0413/VIII/17



MAN TGM 18.340 truck Madrid's Firefighter Truck

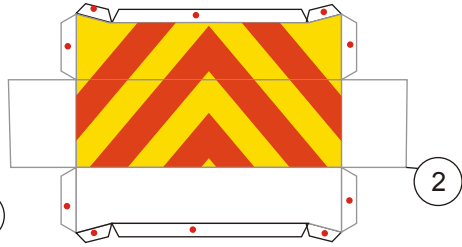
Scale 1 : 32

This truck model was actually a commissioned model from someone last year, but it never made into a complete payment, so I decided to share the model template with you all and make a use of it. The truck is a MAN TGM 18.340. The model uses color scheme from Madrid Firefighter or Bomberos Madrid trucks. The scale is 1:32. The template use 2 type of paper material, which are ordinary 160 gsm plain paper and 2-3 mm thick hard-board or cardboard. There 9 pages of template that you can print, cut, fold, glue and then assembly it into a model truck.

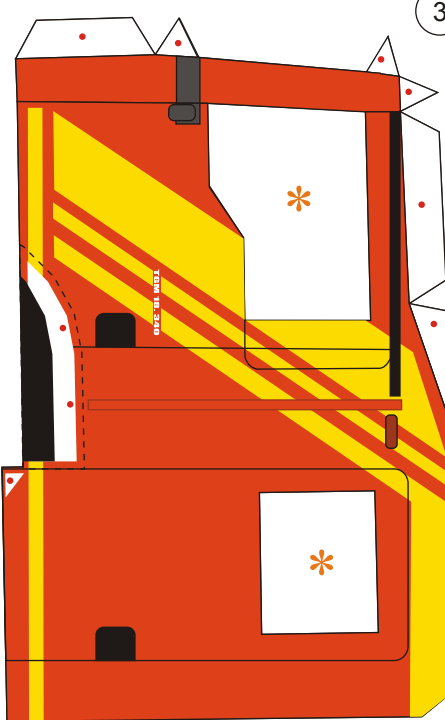
[Assembly Instructions - click here](#)
Petunjuk Perakitan



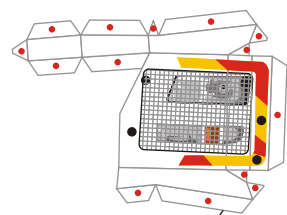
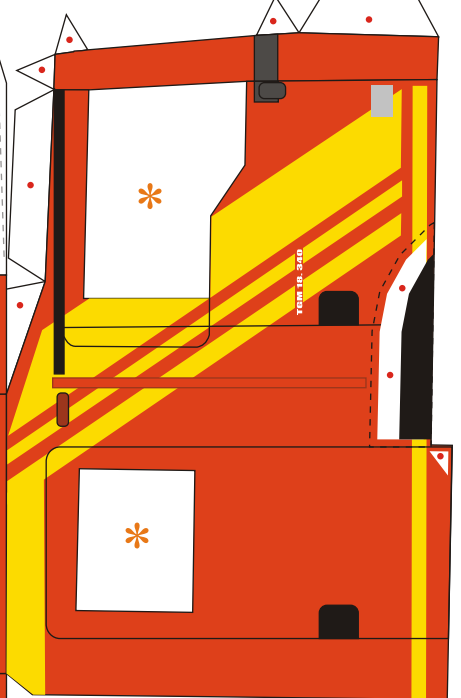
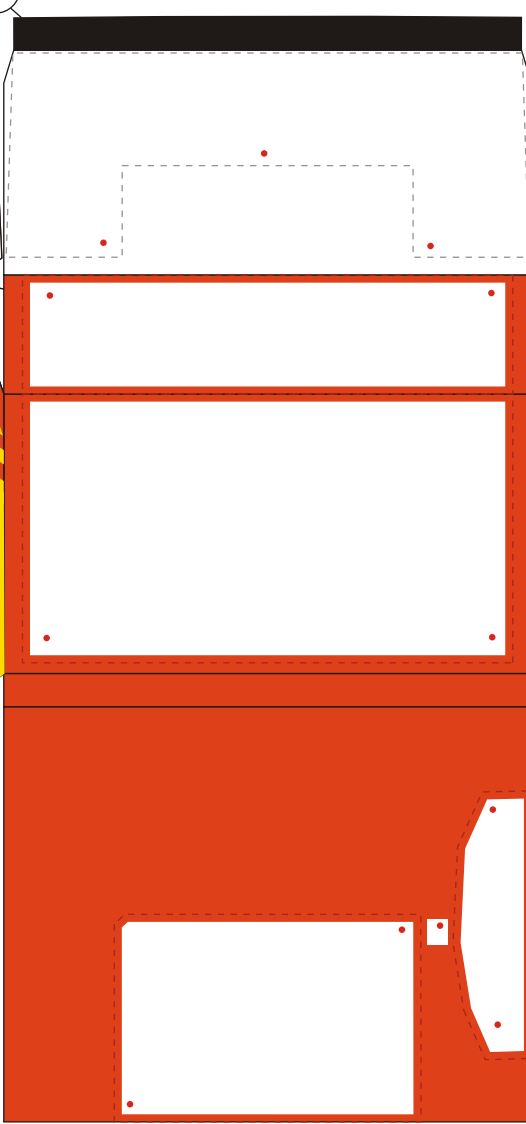
1



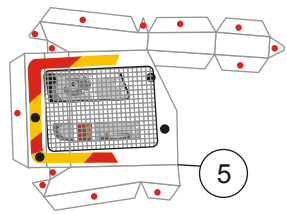
2



3

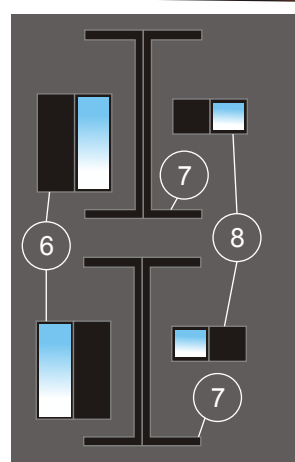


4



5

9

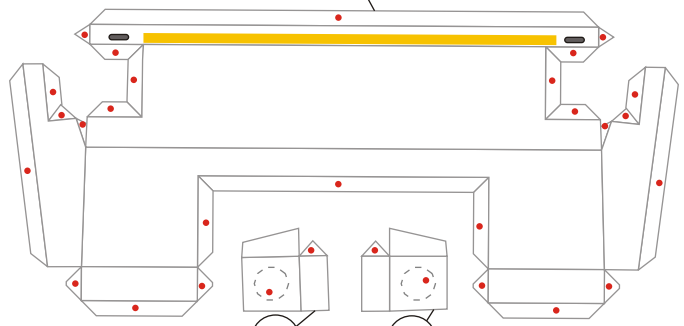


7

6

8

7

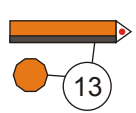


10

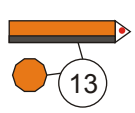
11



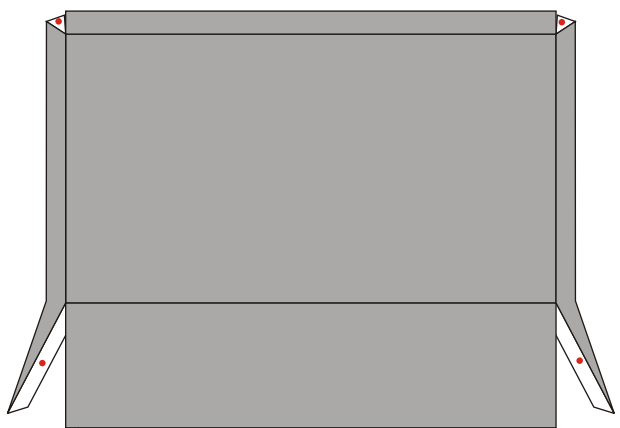
12



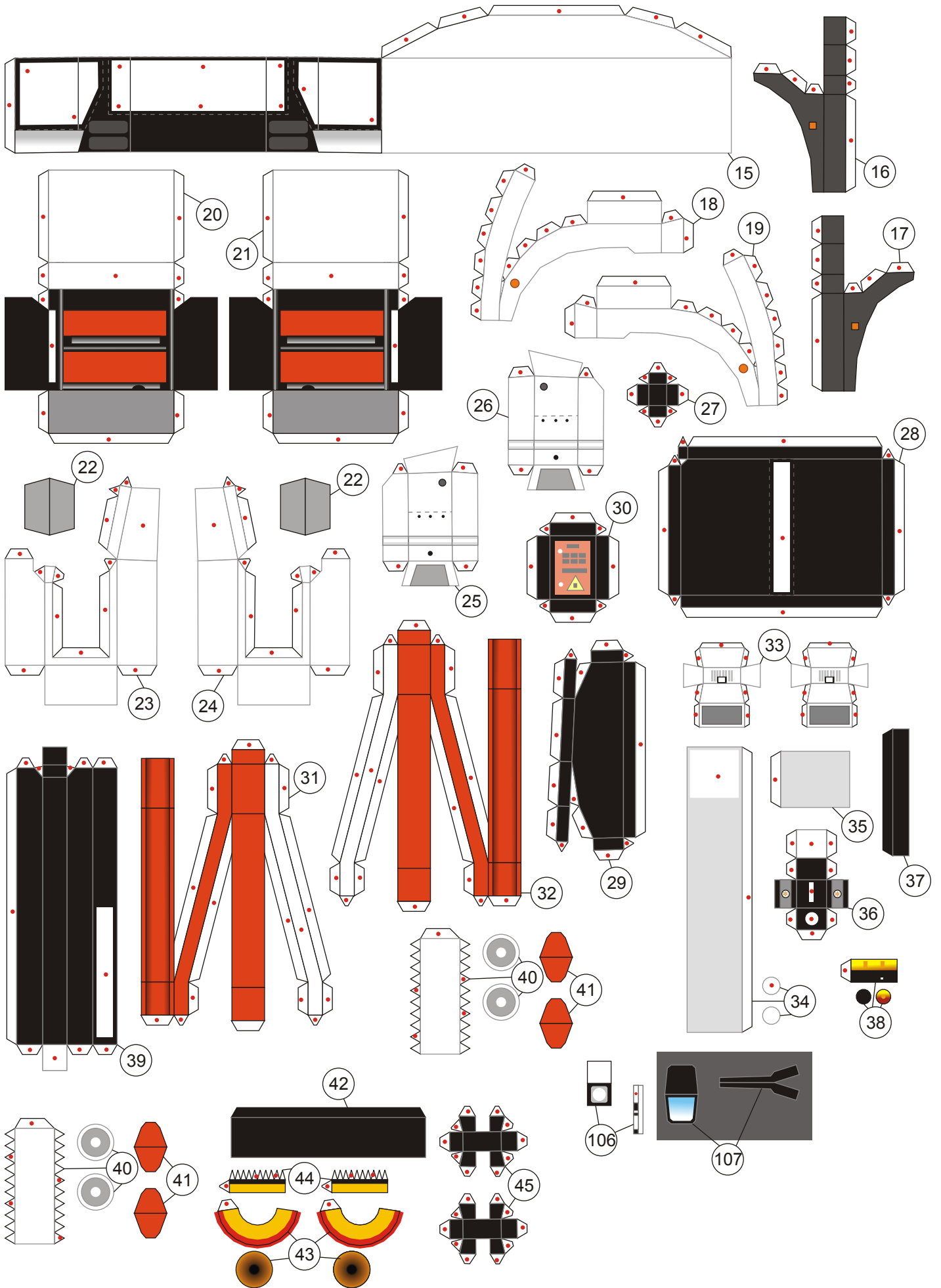
13

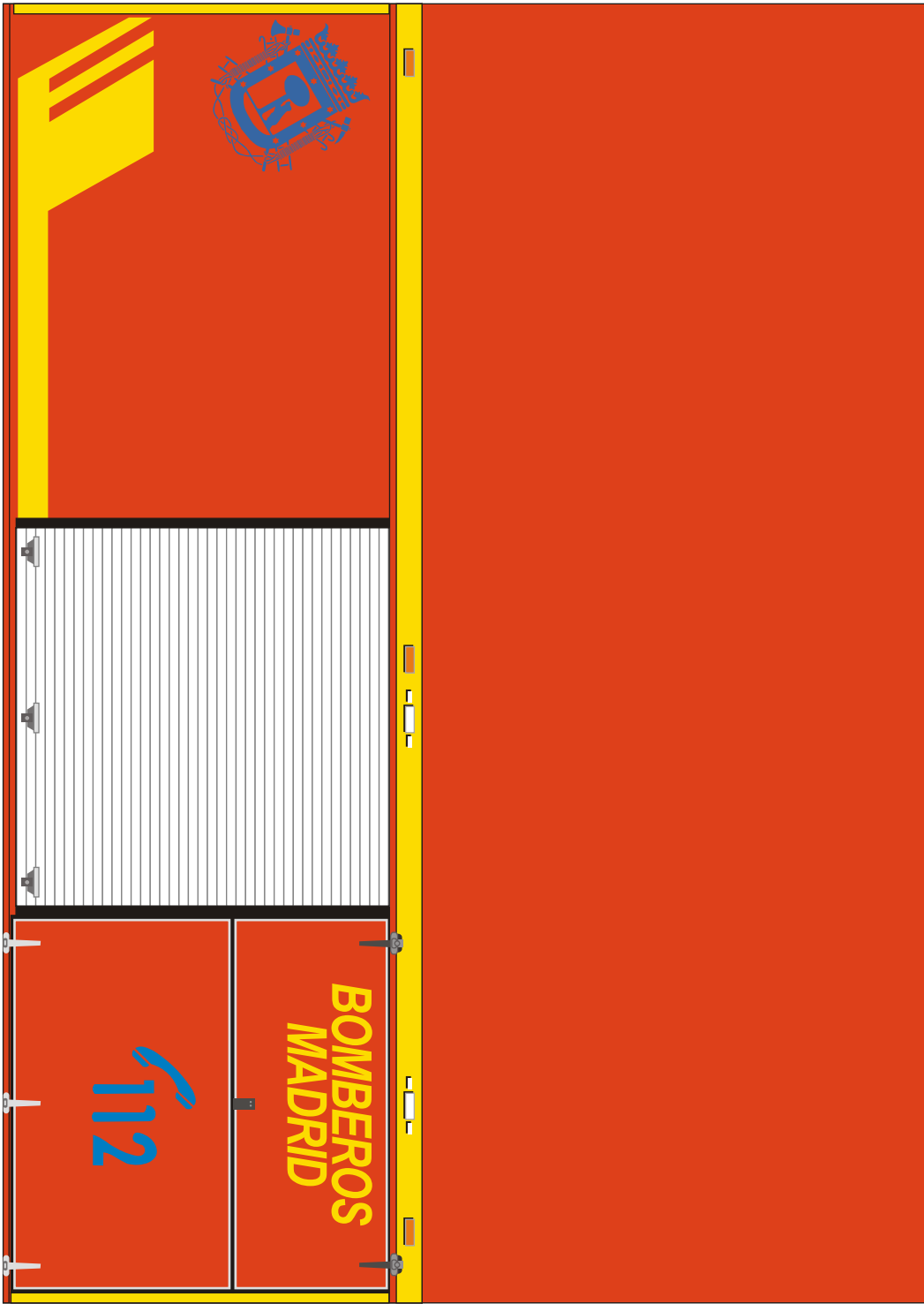


13



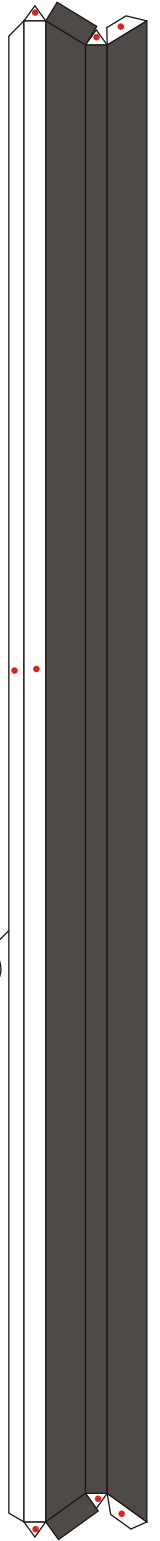
14





46

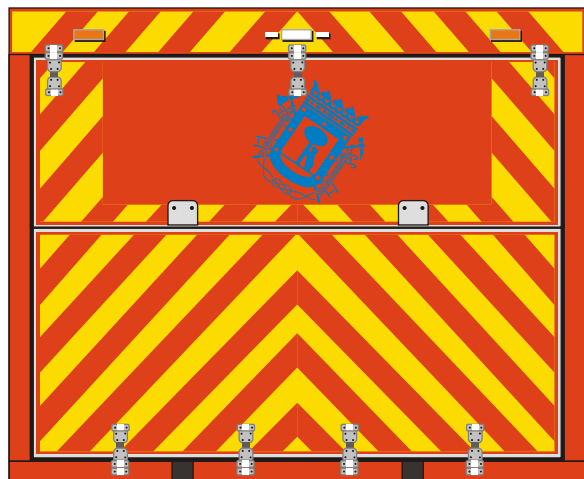
47

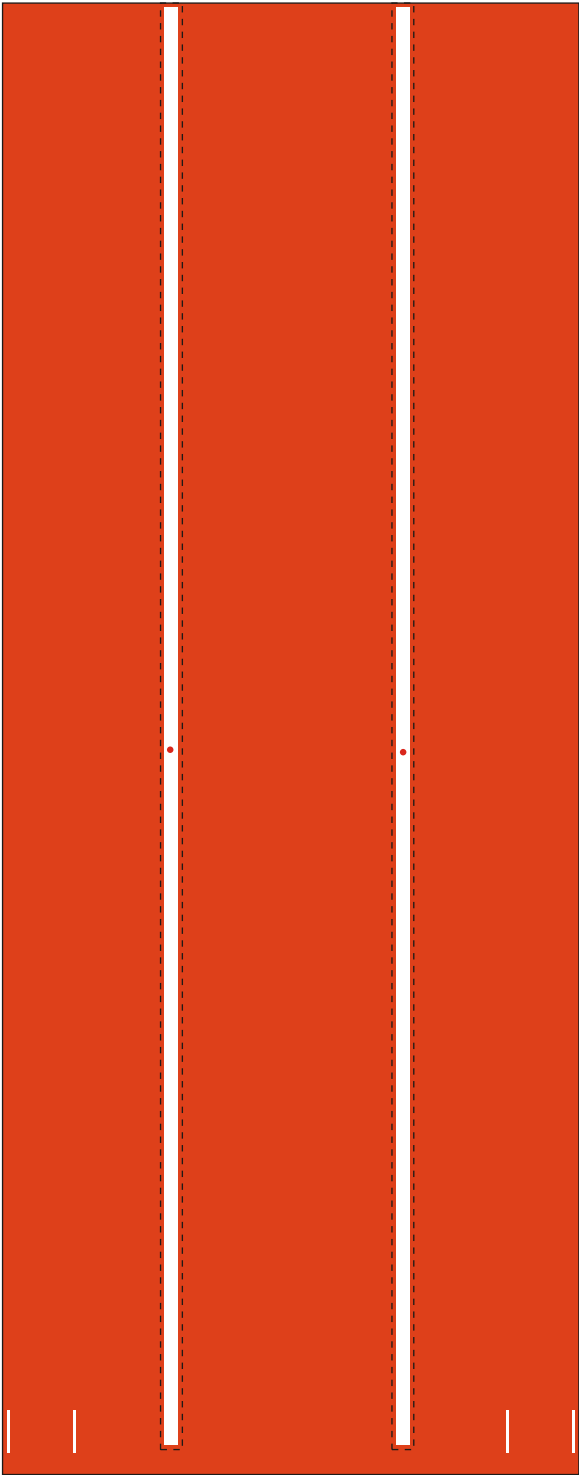


48

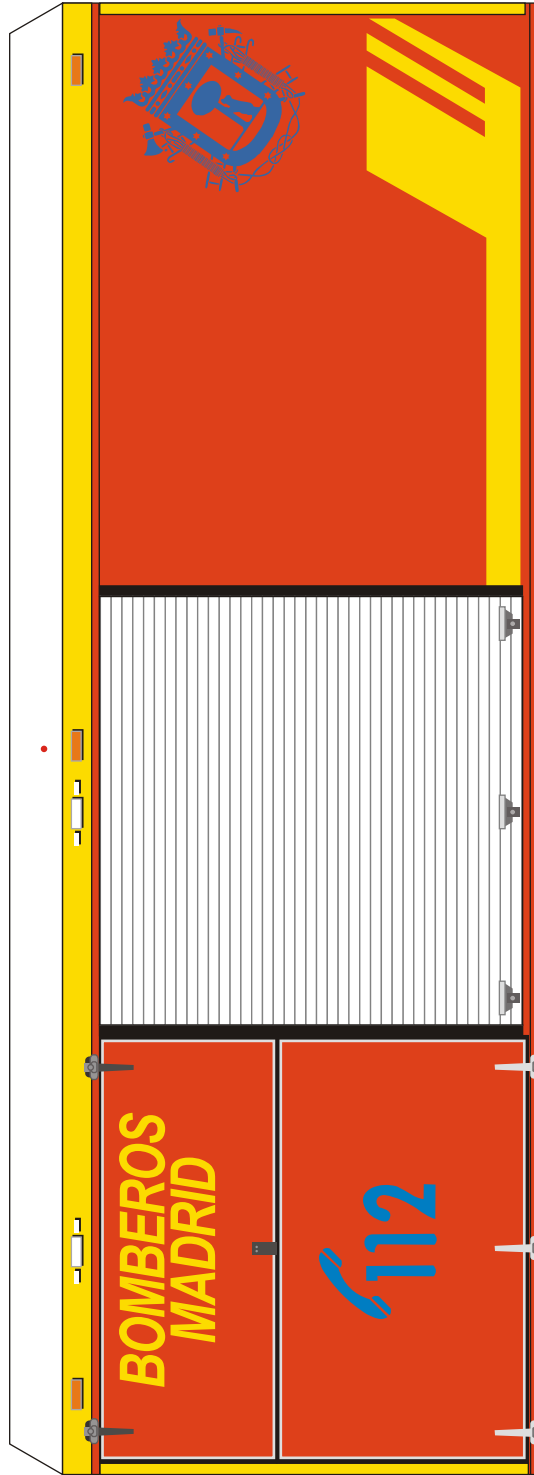


49

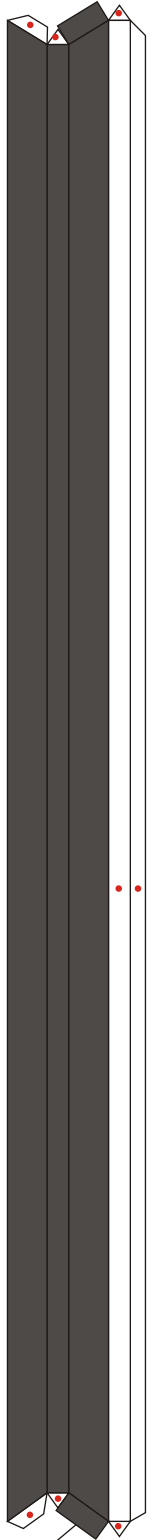




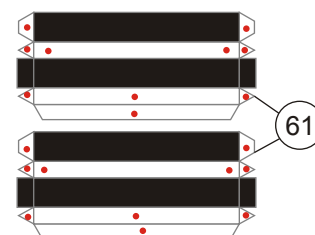
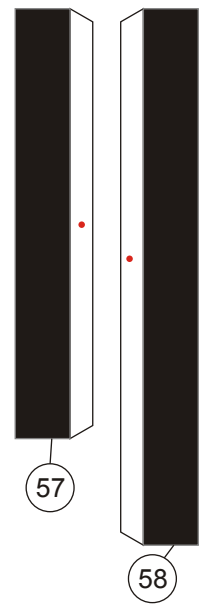
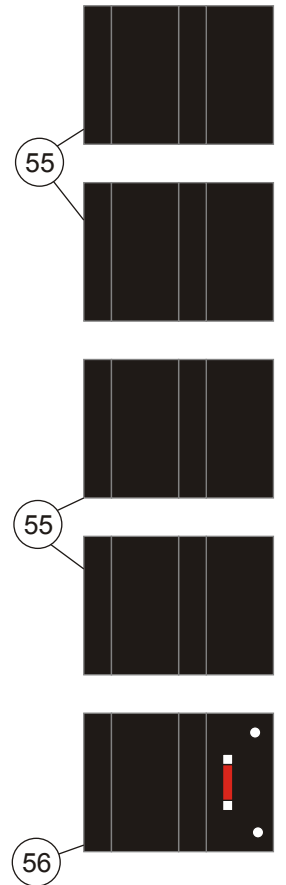
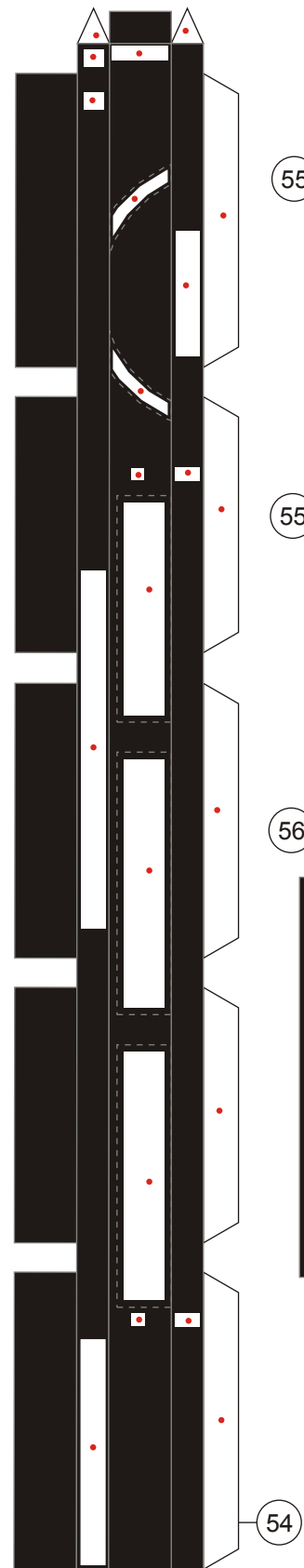
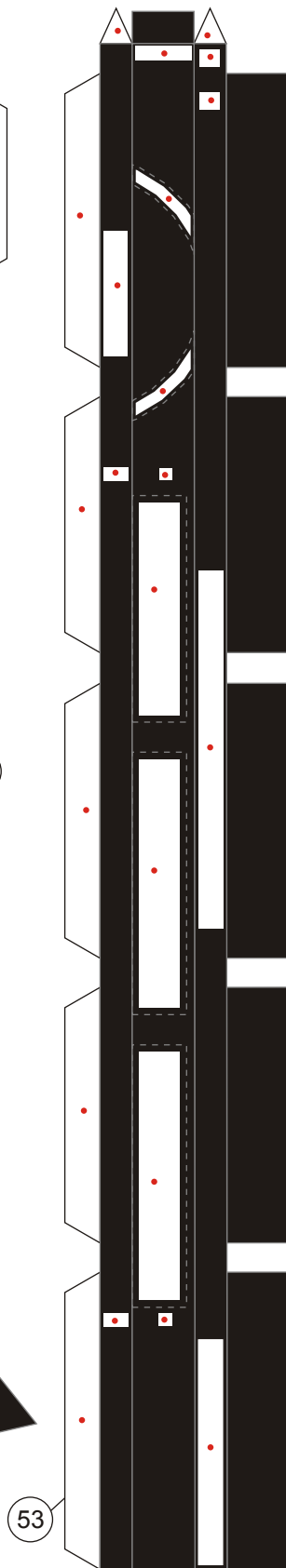
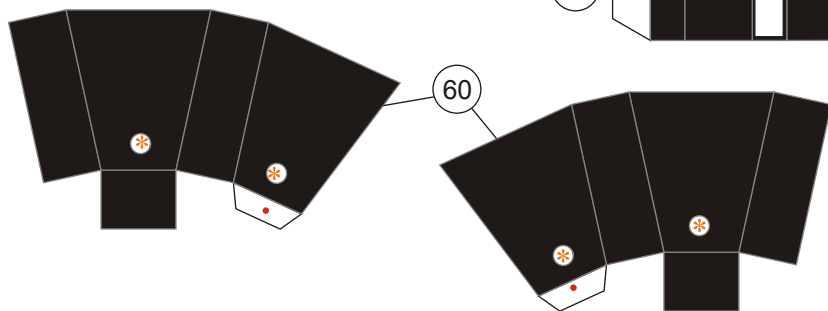
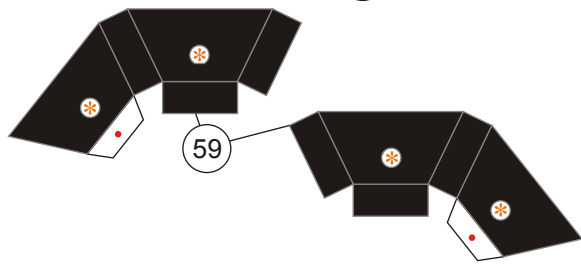
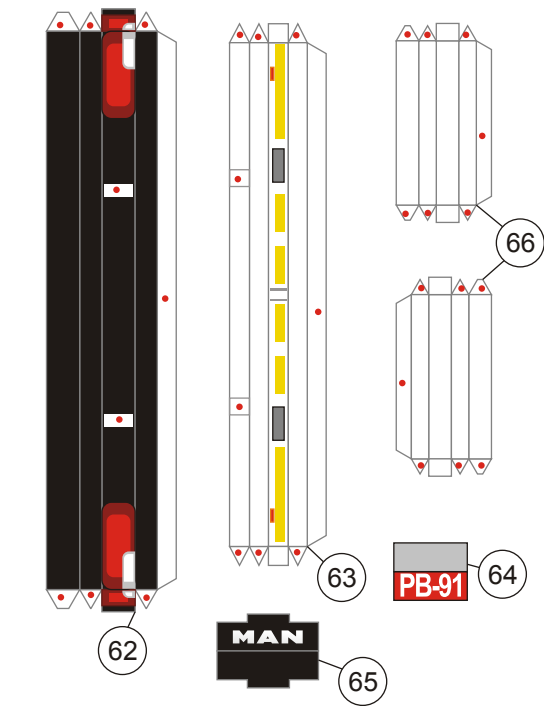
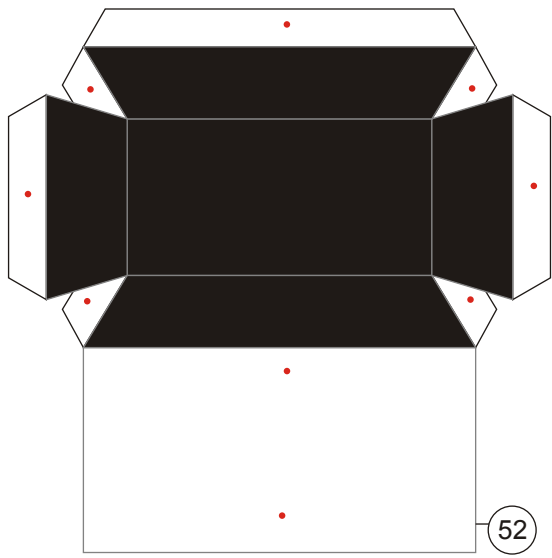
50

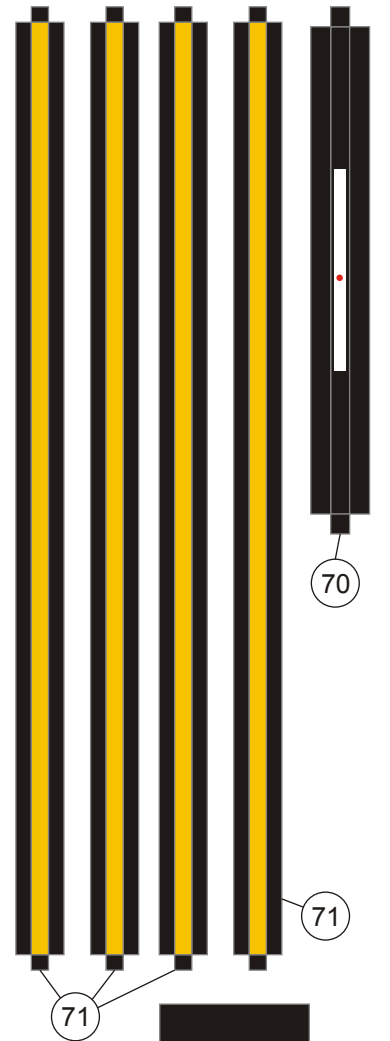
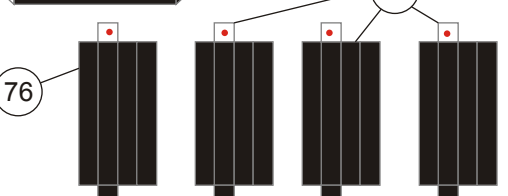
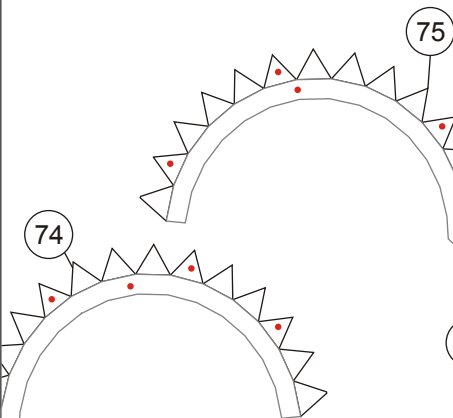
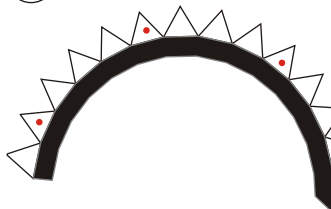
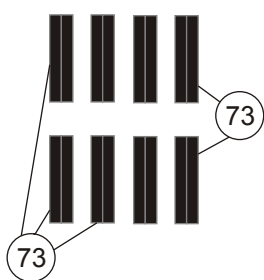
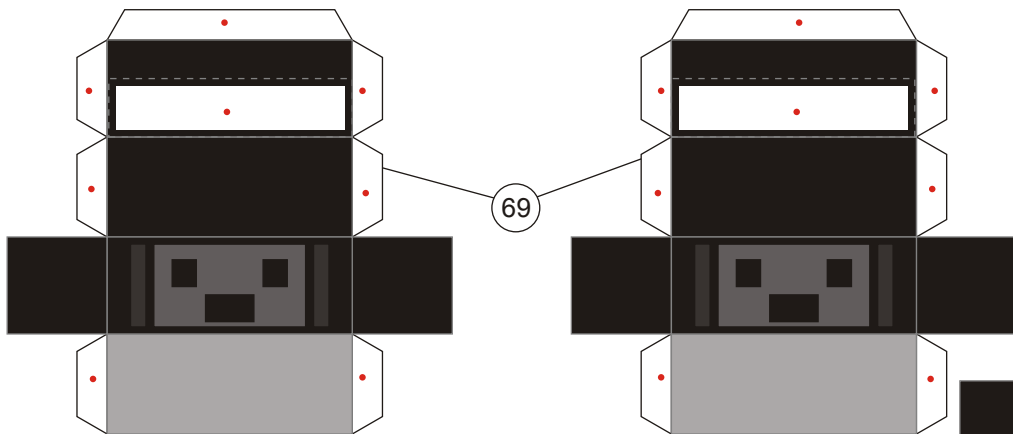
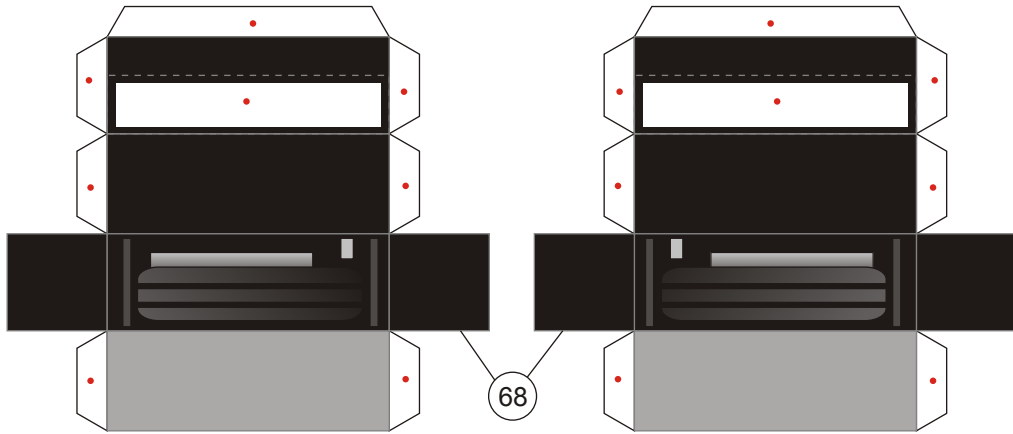
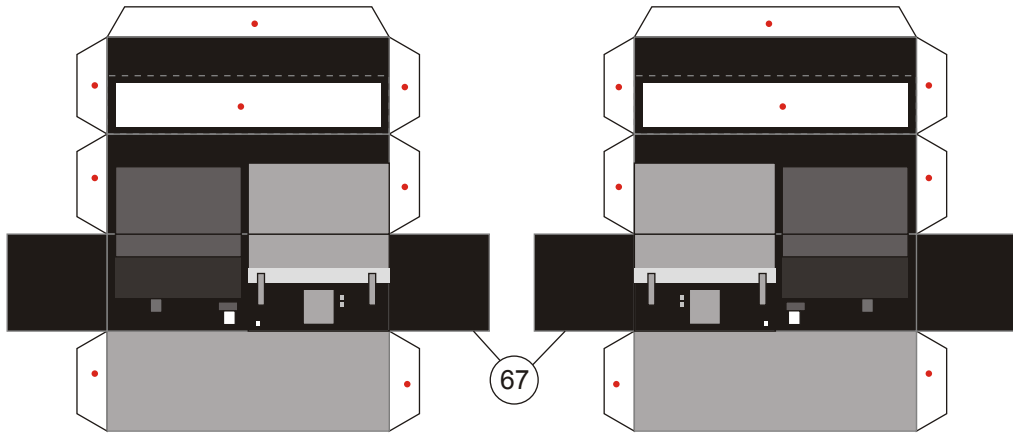


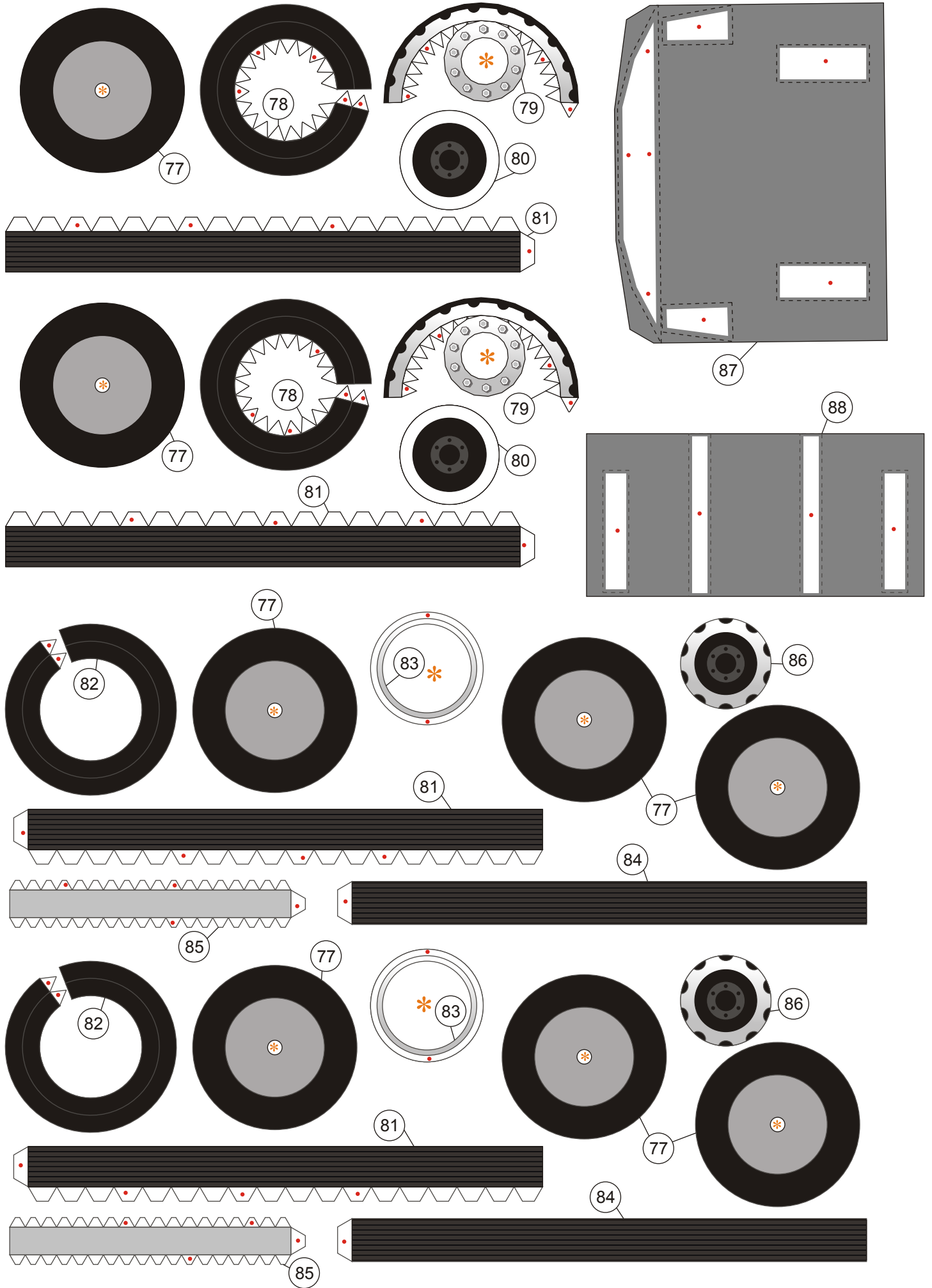
51



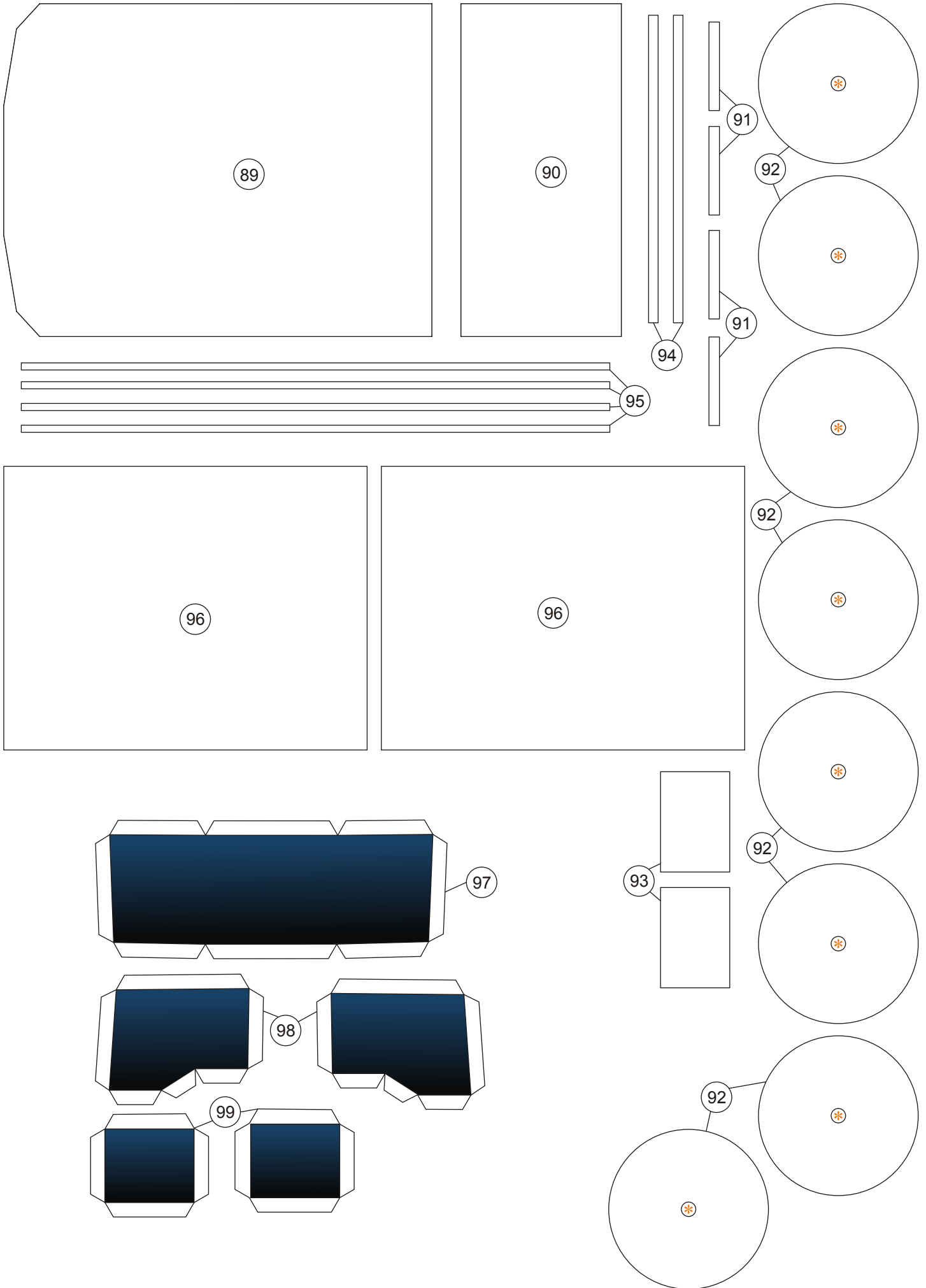
47







2-3 mm cardboard



2-3 mm cardboard

